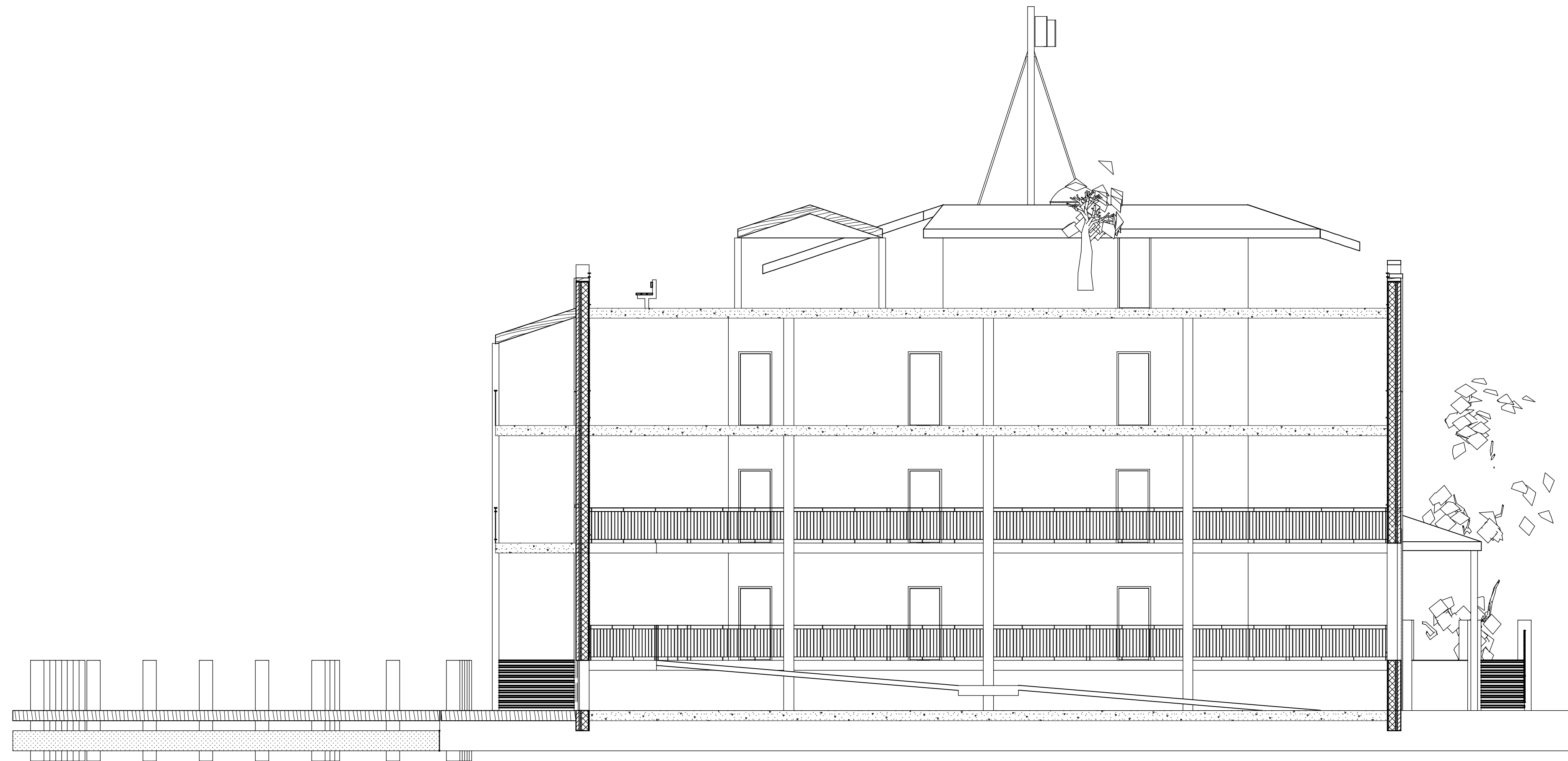


A
B
C
D
E
F



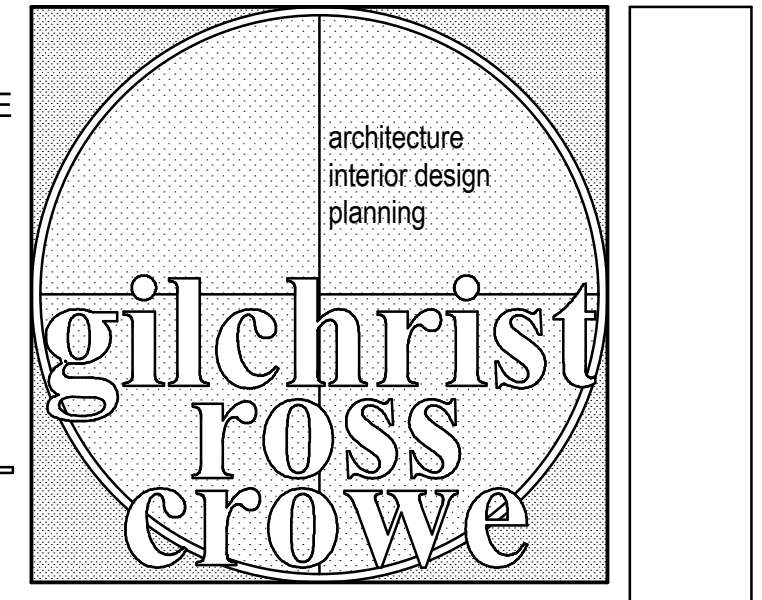
8 : 8'E ngrtl 'ci eyut 'B'EudyEd
 :: cL CaS@ f...A''': /B-
 0 4 8 16'

THESE DRAWINGS AND RENDERINGS ARE INSTRUMENTS OF SERVICE. THE DRAWINGS AND COPIES THEREOF, INCLUDING ELECTRONIC MEDIA AND CAD FILES, ARE THE PROPERTY OF GILCHRIST ROSS CROWE ARCHITECTS, P.A. THEIR USE, REPRESENTATION OR REPRODUCTION IN ACTUAL OR CONTENT BY ANY ENTITY THAT POSSESSES THEM FOR ANY PURPOSE EXCEPT BY WRITTEN AGREEMENT WITH THE ARCHITECT IS PROHIBITED. THIS COPYRIGHT NOTIFICATION SHALL BE TRUE AS IF DIRECTLY PLACED ON EACH DRAWING EXHIBIT OR RENDERING ON THIS DOCUMENT AND SHALL NOT BE REMOVED FROM THESE DOCUMENTS.

Consultants:

PHASE:	BY:	REVIEWED BY:	DATE:
CONCEPT SCHEMATICS	CR	CR	6/12/07
ADVANCED SCHEMATICS			
DESIGN DEVELOPMENT			
100% CONSTR DOCUMENTS			
CONTRACT DOCUMENTS			
PERMIT DOCUMENTS			
REVISION 1			
REVISION 2			
REVISION 3			

Apalachicola Maritime Museum For George Floyd
 Apalachicola, Florida
 GRC Project Number #Pln



architects

413 ALL SAINTS STREET TALLAHASSEE, FLORIDA 32301
 (850) 222-8100 FAX (850) 681-9149 www.architects-gca.com

DRAWING NAME SHEET
Building Section @ Boat Bay **A-11**

SIGNATURE